

STRAIGHT STITCH DESIGNS



BELL TOWN

DESCRIPTION

BELL TOWN is glamour meets versatility with a hi-lo hem and a relaxed fit. The vest is fully lined which gives it a very finished look from both the outside as well as the inside. If you are looking for a casual look, style your vest with a chunky sweater, skinny jeans and booties. For a more dressed up look consider pairing it with a blouse, pencil skirt and some heels. Throw your vest over a dress for the perfect winter layer.

RECOMMENDED FABRICS

Main: Faux Fur, Twill, Flannel, Wool

Lining: Rayon Challis, Voile, Cotton Lawn, Double Gauze.

TERMS OF USE

You may make and sell garments made from this pattern in a small scale home business. Please credit "Pattern Designed by Kimberly Payne of Straight Stitch Designs" in any listings. You may not however redistribute this pattern in any form whether by email or paper to another person.



SIZING

The pattern includes women's sizes 0 through 24. ***Please use your full bust measurement according to the chart to ensure best fit.*** This top is designed to be fitted at the chest and relaxed through the waist and hips. All pattern pieces are nested in a way that allows for grading between sizes.

SIZE CHART - IMPERIAL (IN.)

Size	0	2	4	6	8	10	12	14	16	18	20	22	24
Bust	32	33	34	35	36	37.5	39	40.5	42.5	44.5	46.5	48.5	50.5
Waist	24	25	26	27	28	29.5	31	32.5	36.5	38.5	40.5	42.5	44.5
Hip	34.5	35.5	36.5	37.5	38.5	40	41.5	43	45	47	49	51	53

SIZE CHART - METRIC (CM.)

Size	0	2	4	6	8	10	12	14	16	18	20	22	24
Bust	81	84	86	89	91	95	99	103	108	113	119	124.5	129.5
Waist	61.5	64	66.5	69	72	75.5	79.5	83.25	93.5	99	103.5	109	114
Hip	86	90	93	95	98	101	105	109	114	119	125.5	131	136

FINISHED GARMENT MEASUREMENTS

Finished garment measurements are provided so you can make adjustments for a custom fit.

IMPERIAL (IN.)

Size	0	2	4	6	8	10	12	14	16	18	20	22	24
Bust	37.75	38.25	38.75	39.25	39.75	40.75	41.5	42.5	43.75	45	46	47	48
Waist	36	36.75	37.25	38	38.5	39.75	40.25	41.75	43	44.25	45.5	46.5	47.5
Hip	37.75	38.25	39	39.5	40.25	41.5	42	43.5	44.75	46	47	48	49
Length	25.5	25.5	25.75	26	26.25	26.75	27	27.5	28	28.5	29.25	30	30.5

METRIC (CM.)

Size	0	2	4	6	8	10	12	14	16	18	20	22	24
Bust	95.5	96.75	98	99.5	101	103.75	105.25	108.25	111.25	114	116.75	119.75	122
Waist	91.5	93.25	94.75	96.25	97.75	101.25	102.5	105.75	109	112.24	115.5	118.25	120.5
Hip	95.5	97	98.75	100.5	102	105.25	106.75	110.25	113.5	116.75	119.5	122	125
Length	64.75	65.25	65.5	66	66.75	68	68.5	70	71.25	72.5	74.25	76.25	77.5

FABRIC REQUIREMENTS

44" Fabric Width

Sizes 0-12:

Main Fabric: 1 3/8 yards/130cm

Lining: 1 1/4 yards/120cm

Sizes 14-24:

Main Fabric: 1 7/8 yards/170cm

Lining: 1 3/4 yards/160cm

60" and 54" Fabric Width

Sizes 0-12:

Main Fabric: 7/8 yards/80cm

Lining: 7/8 yards/80cm

Sizes 14-24:

Main Fabric: 1 yard/90cm

Lining: 7/8 yards/80cm

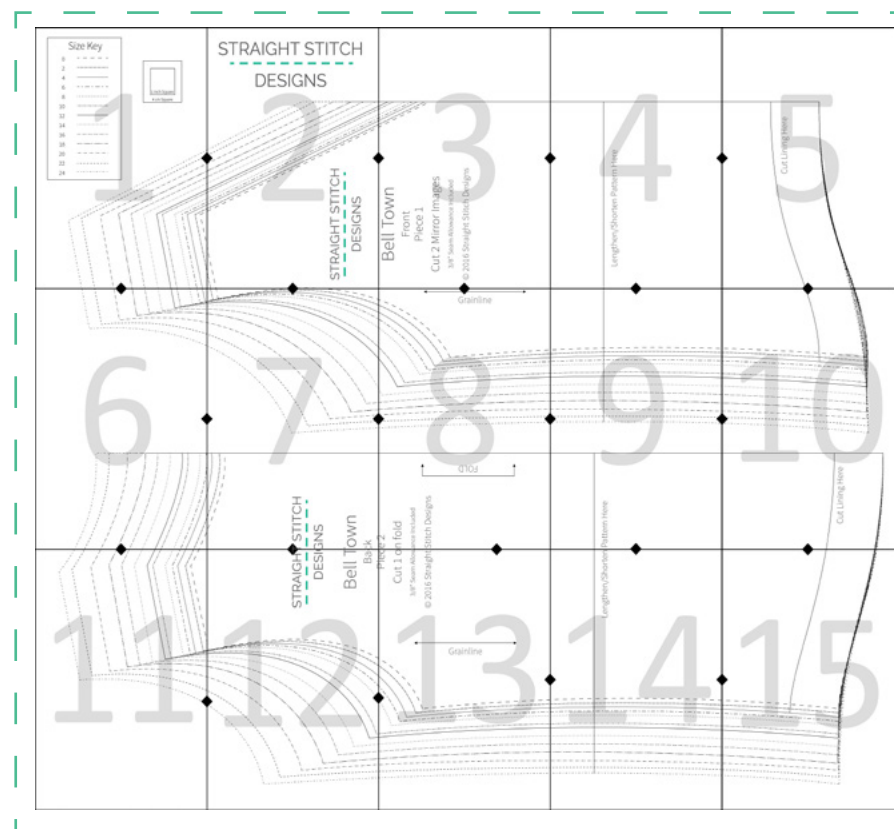
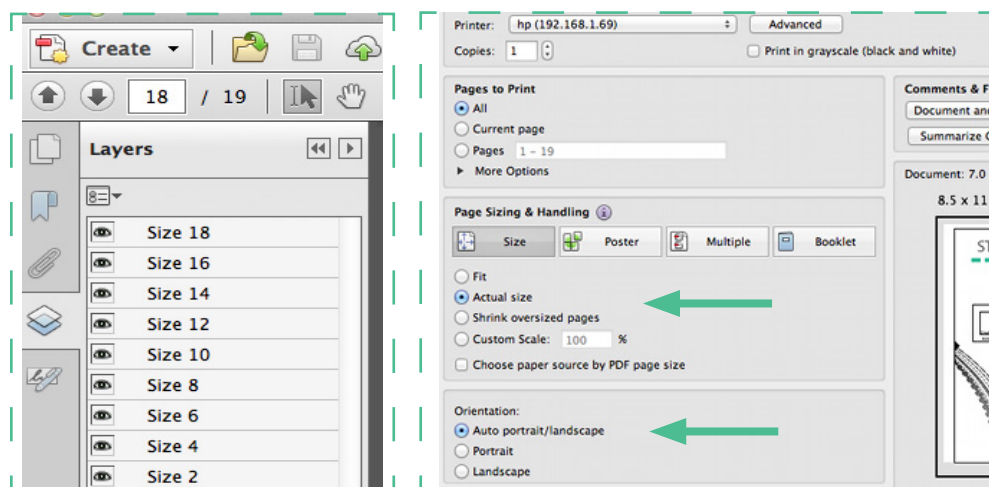
If you have a directional print allow for additional yardage



PRINTING INSTRUCTIONS

This pattern includes layered pattern tiles which allows you to print only the sizes that you need. This feature is only available when using Acrobat Reader. Once you have the file open, click on the layers icon on the left-hand side. Next to each size you will see an icon that looks like an eye. By clicking the eye icon, you can turn on and off the layers. You must leave the bottom two layers visible to see all of the pattern notes.

When printing, make sure to select Actual Size and Auto Portrait/Landscape in your print dialog. Please consider conserving paper and only printing the pattern pieces. **Pattern can be found on pages 7-21.**



TILE TAPING INSTRUCTIONS

This pattern is made up of 15 pattern tiles. Each page is numbered to help when assembling the pattern. Use the image above as a reference when taping the pages together. To ensure the pattern comes together correctly, make sure to match up the diamonds found along the sides of the tiles.

Make sure to check that the 1" and 4cm squares are correct before taping together.

FABRIC CUTTING INSTRUCTIONS

Front (Piece 1): Cut 2 Mirror Image in both main fabric and lining.

Back (Piece 2): Cut 1 on the fold in both the main fabric and lining.

WORKING WITH FAUX FUR

Here are some helpful tips I learned while working with faux fur.

- Make sure when cutting out the pattern pieces you are only cutting through the backing on the fur and not the actual fur. Not only will this give you a more realistic look from the fur side but it will lead to much less mess.
- Use lots and lots of pins, the fur wants to go in all kinds of directions so the pins keep everything in place.

SEWING INSTRUCTIONS

All seam allowances are 3/8"/1cm unless otherwise noted.

Different shading indicates the wrong and right side of the fabric and wrong and right side of the lining.



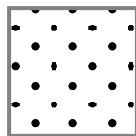
Right Side
Main



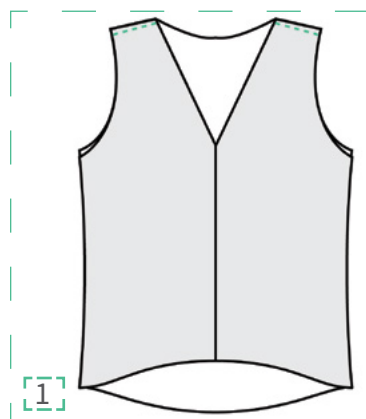
Wrong Side
Main



Right Side
Lining

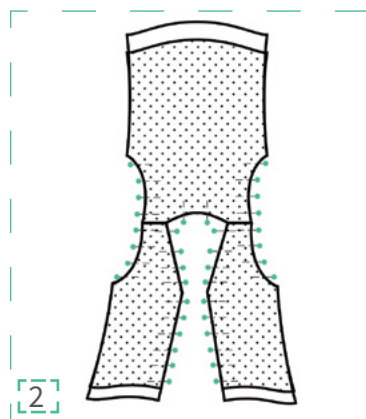


Wrong Side
Lining



With right sides together sew the shoulder seams of the two front pieces to the back piece.

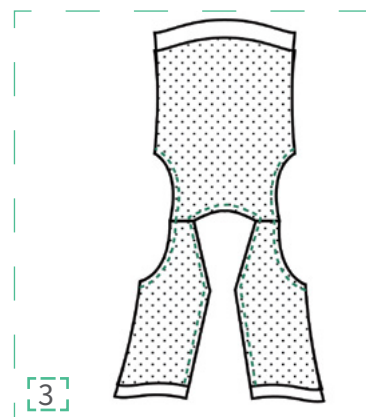
Repeat with the lining pieces.



Lay your lining piece on top of the main pieces right sides together. Match your center back and shoulder seams.

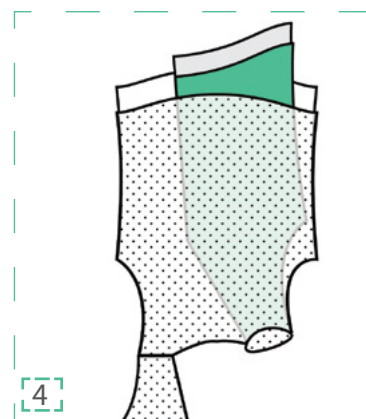
Pin and pin and pin!

That fur is shifty so keep pinning.

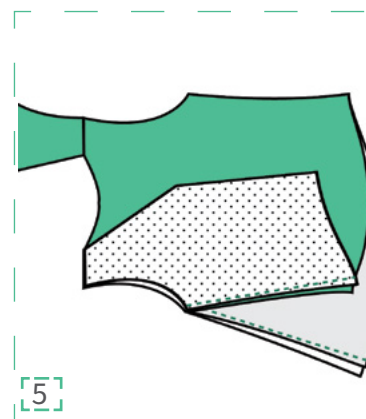


Sew the main and lining pieces together along the armholes.

Starting 1/2" from the bottom edge of the lining sew the two pieces together along the inner edge of the front piece and around the back neck. Ending on the other front piece 1/2" from the bottom of the lining.



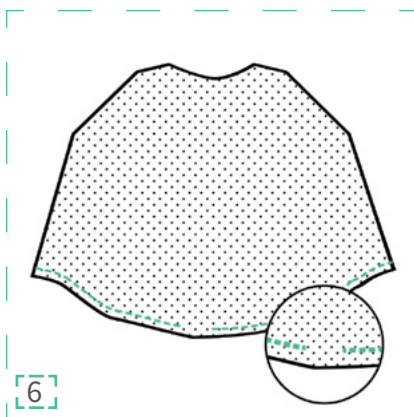
Turn your piece right side out by pulling the front pieces through the shoulder seams.



Now to sew the side seams.

Match the front and back of the lining pieces right sides together. Do the same for the main pieces right sides together. Sew the entire length of the side seam from the bottom edge of the lining to the bottom edge of the main fabric.

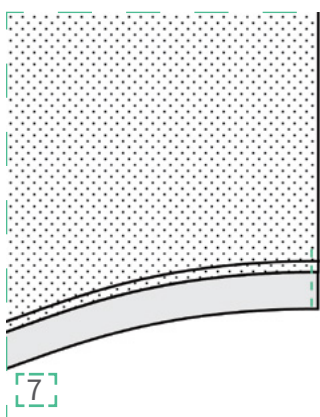
Repeat with the other side seam.



Turn the vest inside out.

With right sides together match the bottom hem of the lining to the bottom hem of the main fabric.

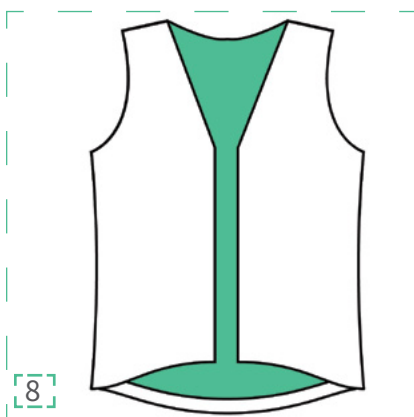
Sew together leaving a 3-4" space for turning right side out.



Before turning the vest right side out you need to close the inside edge of the front pieces.

Fold the seam allowance towards the bottom hem and sew a vertical stitch from just above the seam allowance to the bottom hem. Repeat with other edge.

Turn vest right side out and handstitch the opening closed.



Ta Da! You have finished your new vest.

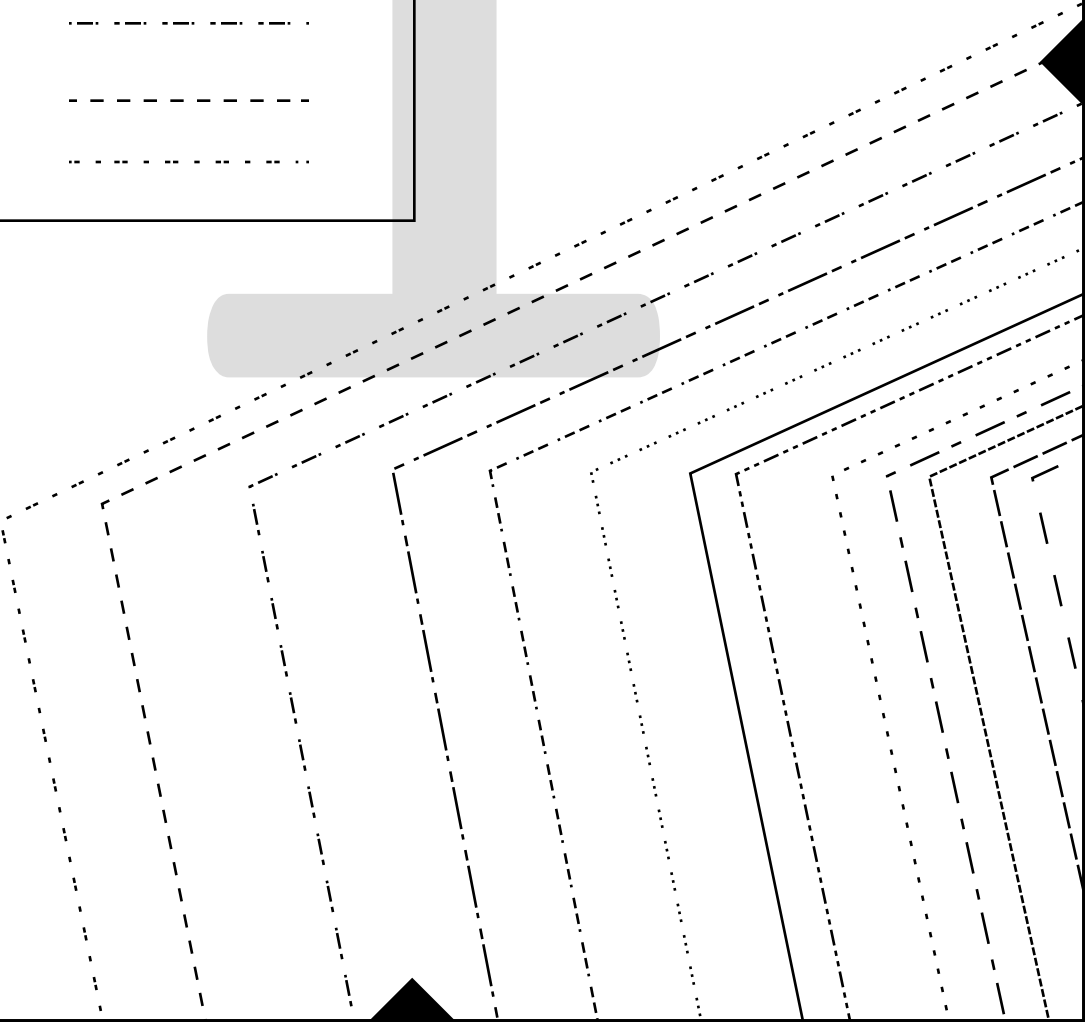
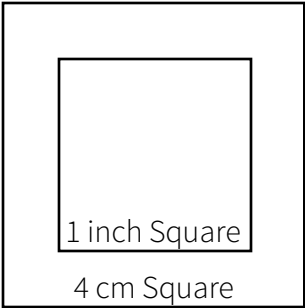
Additional Resources

I am always here to answer your questions, so don't hesitate to email me at kimberly@straightstitchdesigns.com. Some (my husband) think I have my phone attached to my hand at all times :)

#belltownvest
#straightstitchdesigns

Size Key

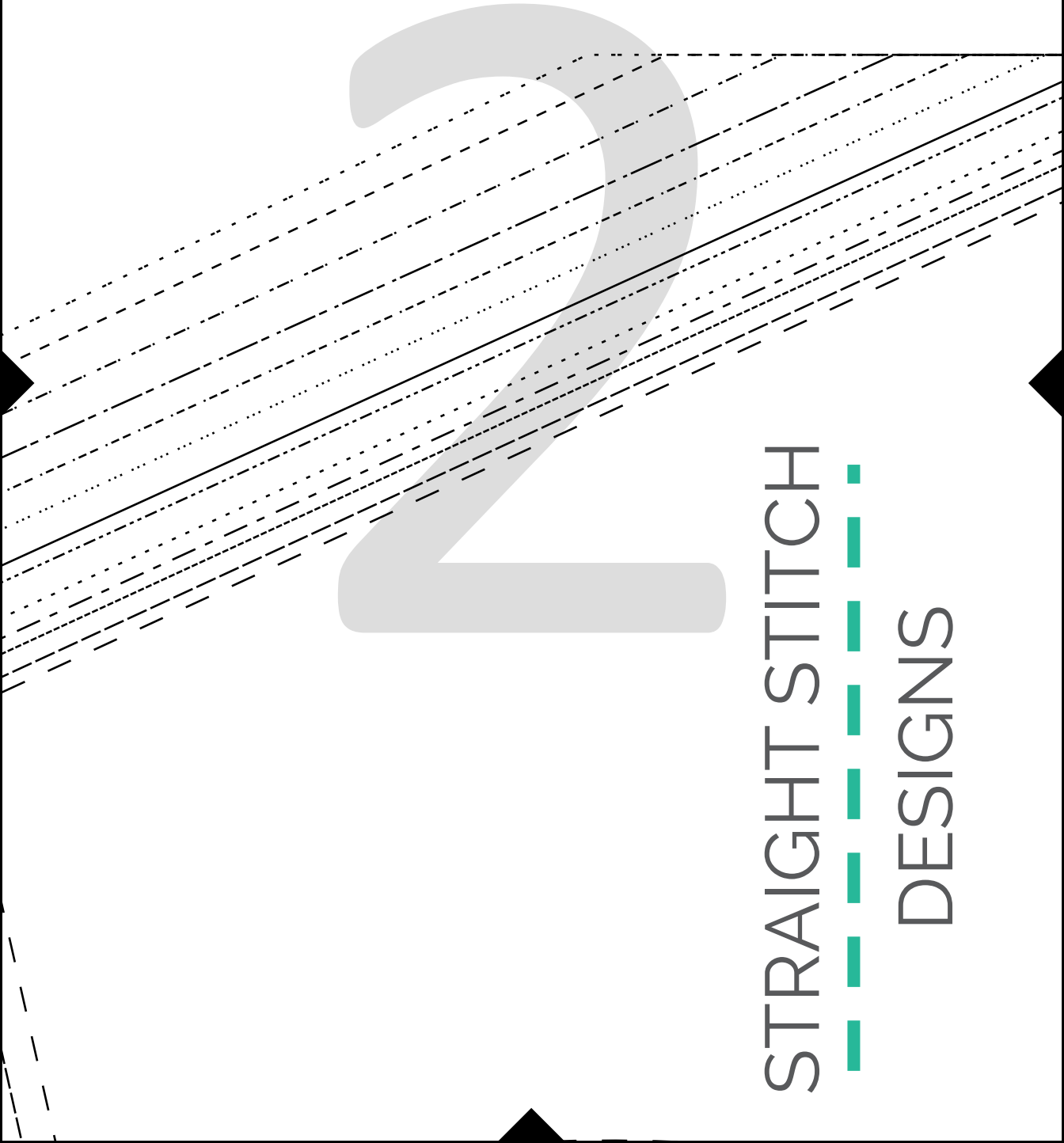
0	-----
2	-----
4	-----
6	-----
8	-----
10	-----
12	-----
14	-----
16	-----
18	-----
20	-----
22	-----
24	-----



STRAIGHT STITCH

— — — — —

DESIGNS



STRAIGHT STITCH

— — — — —

DESIGNS

Bell Town

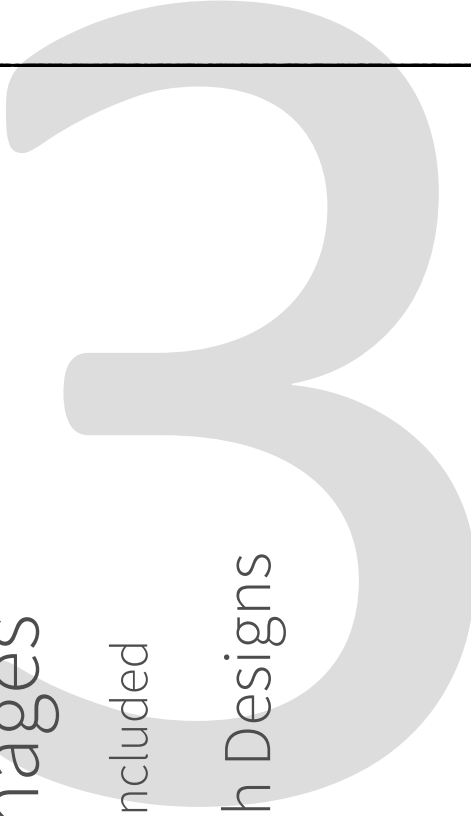
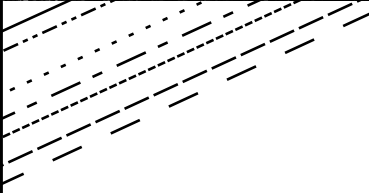
Front

Piece 1

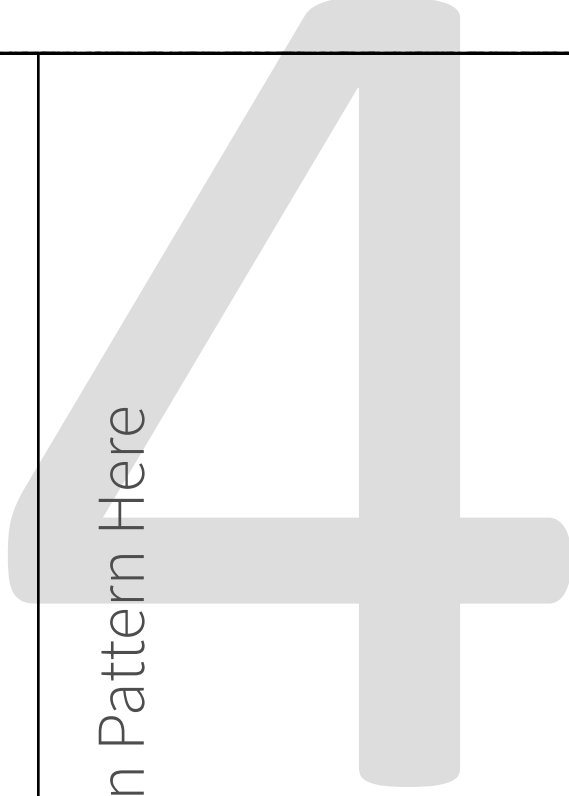
Cut 2 Mirror Images

3/8" Seam Allowance Included

© 2016 Straight Stitch Designs

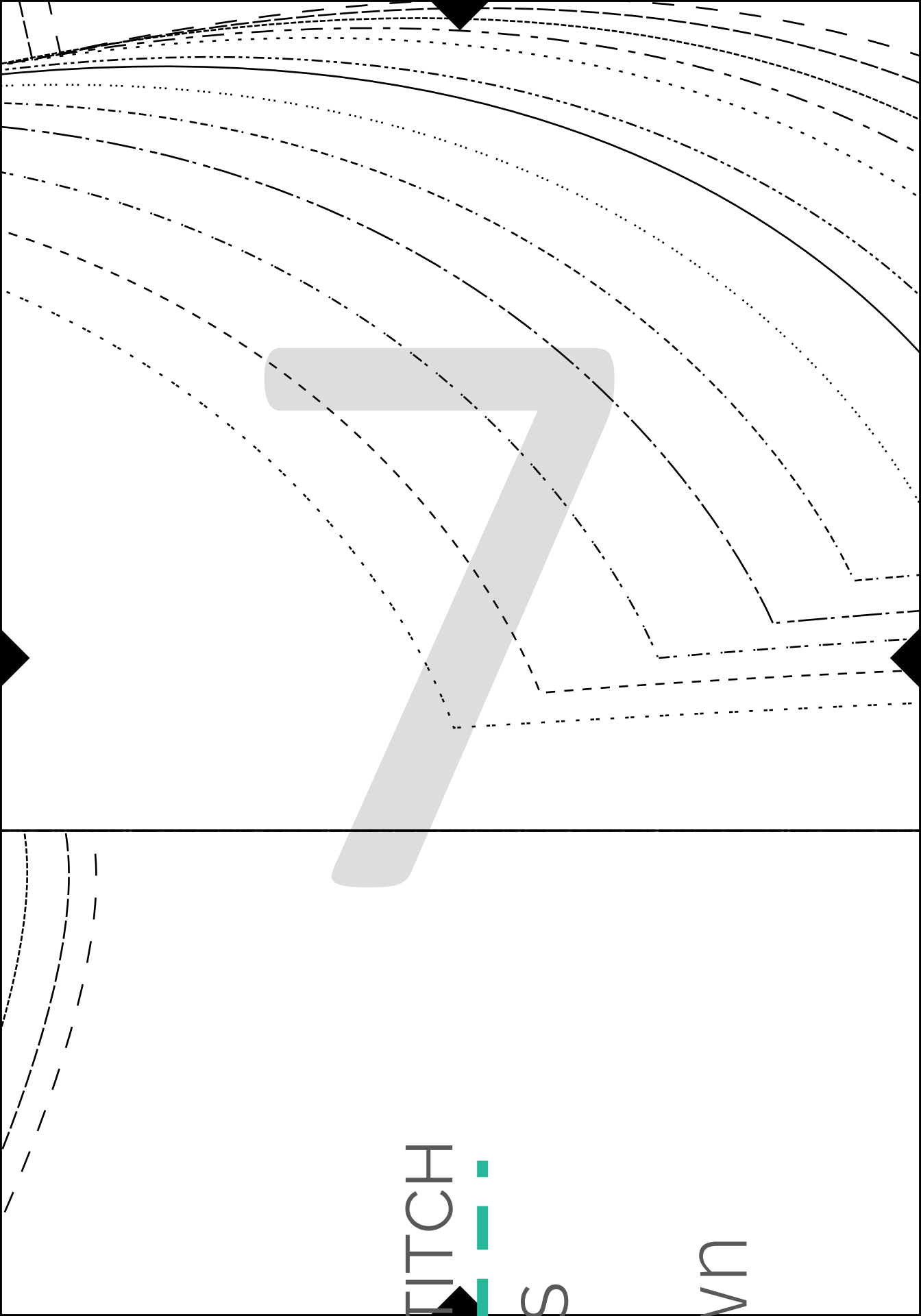


Lengthen/Shorten Pattern Here



Cut Lining Here

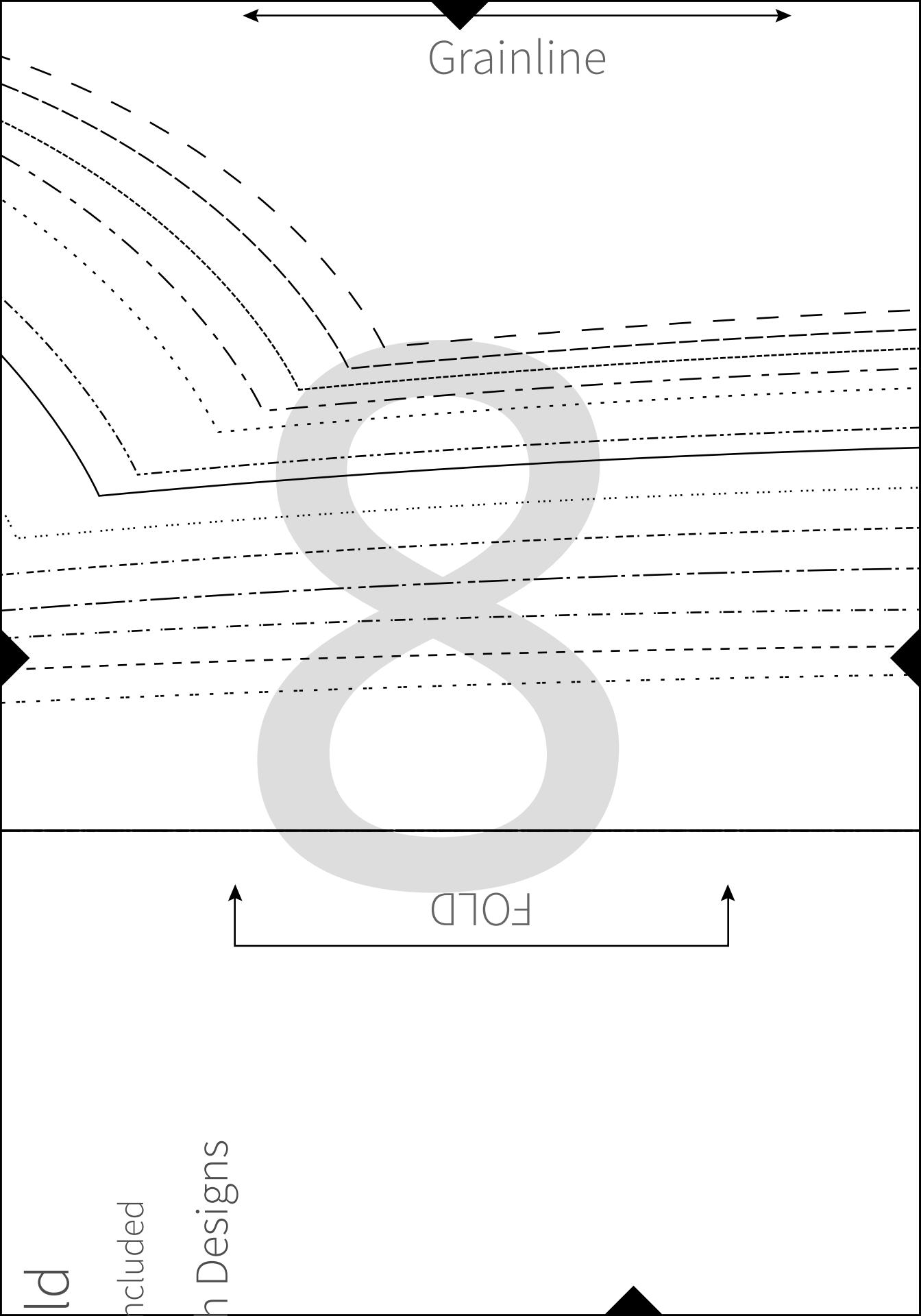
6



FITCH

S

vn



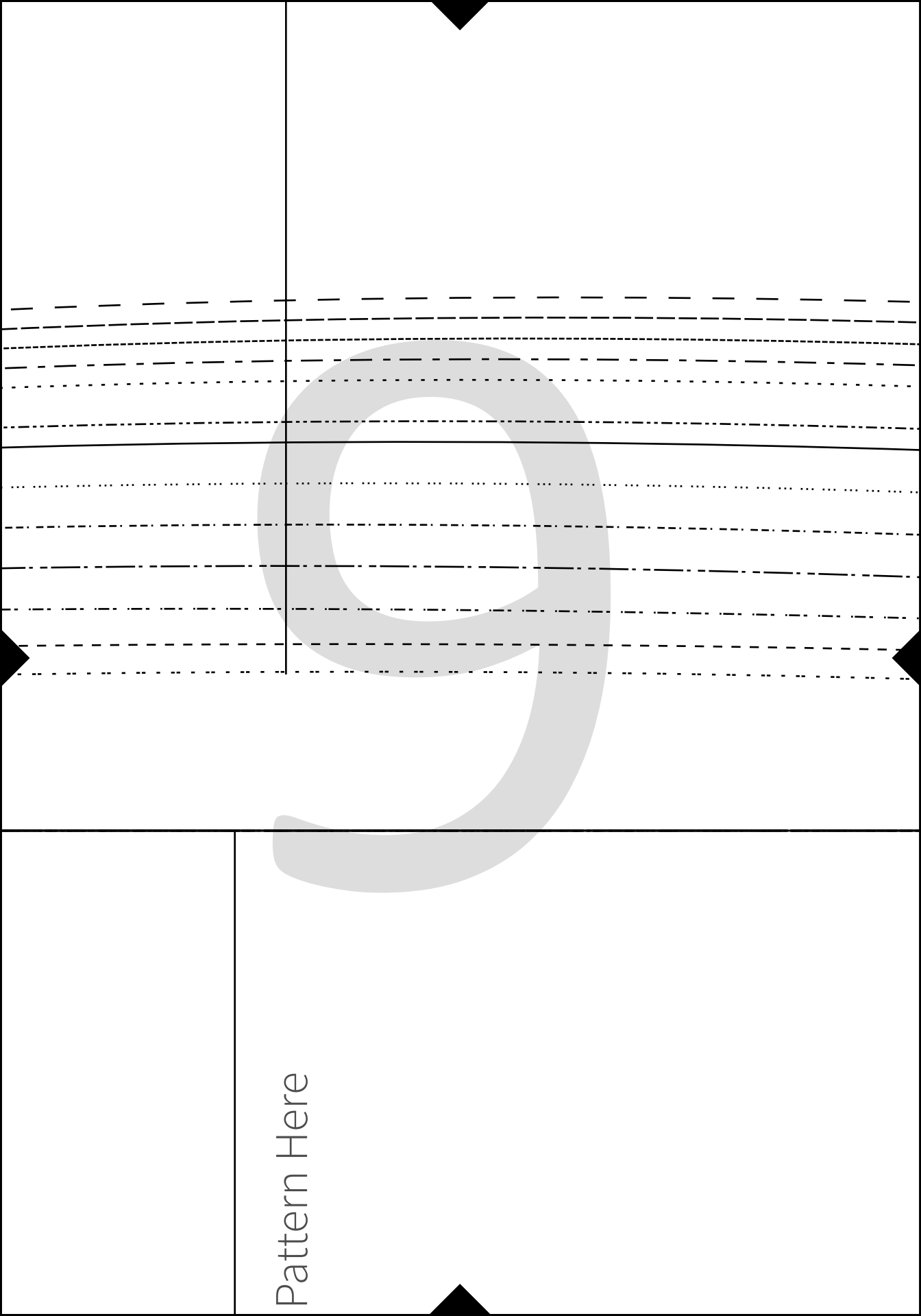
Grainline

FOLD

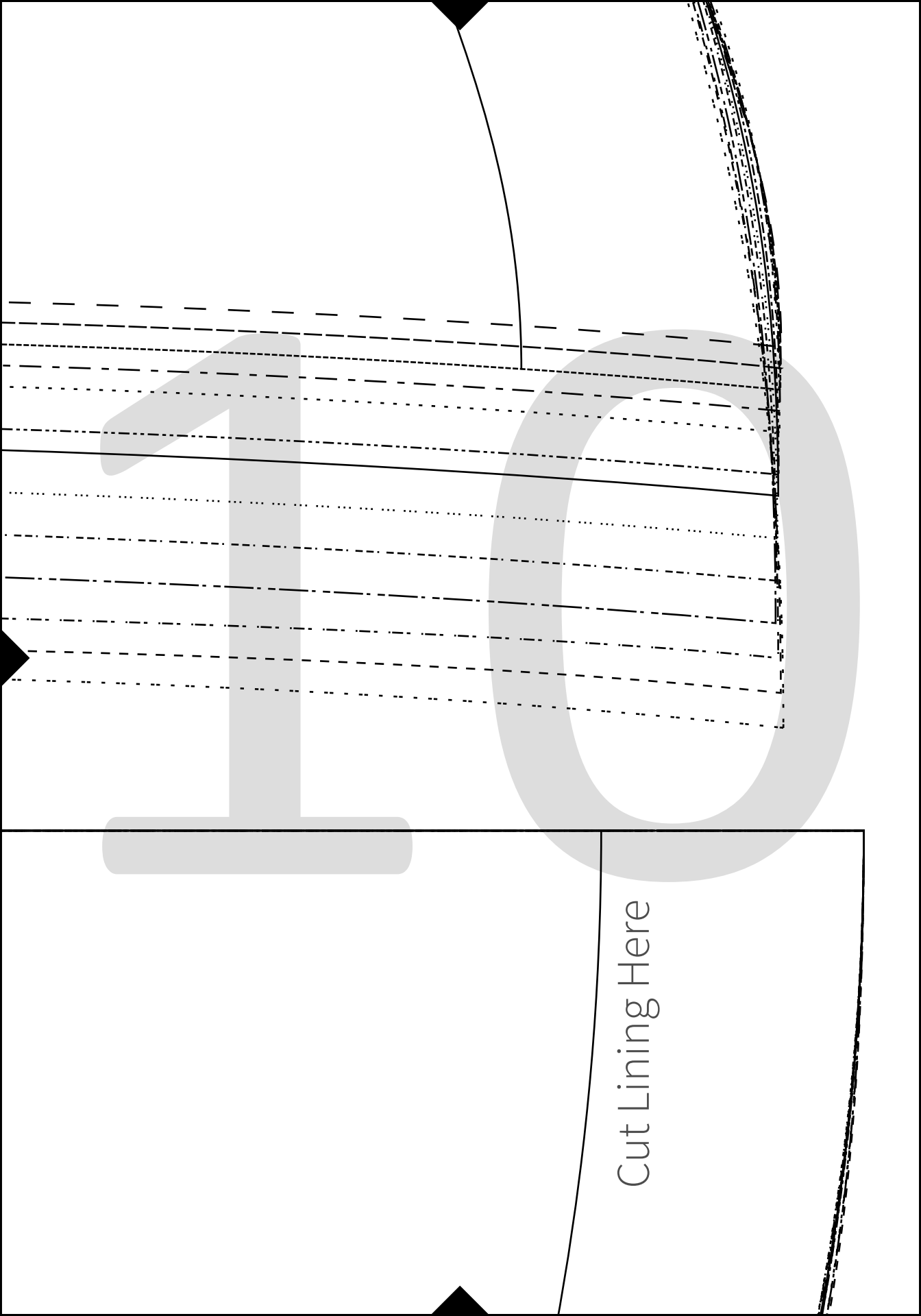
Id

cluded

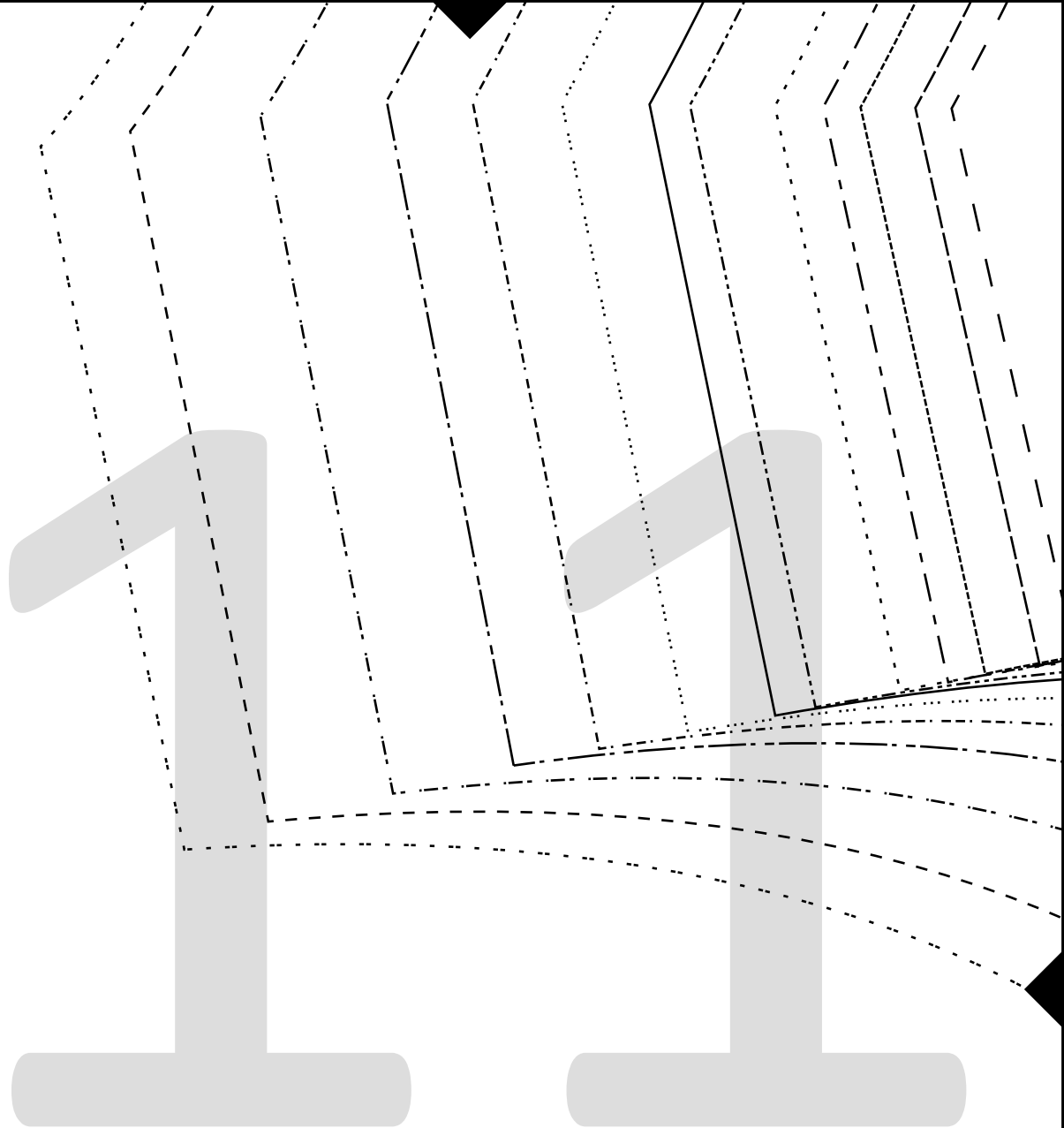
n Designs

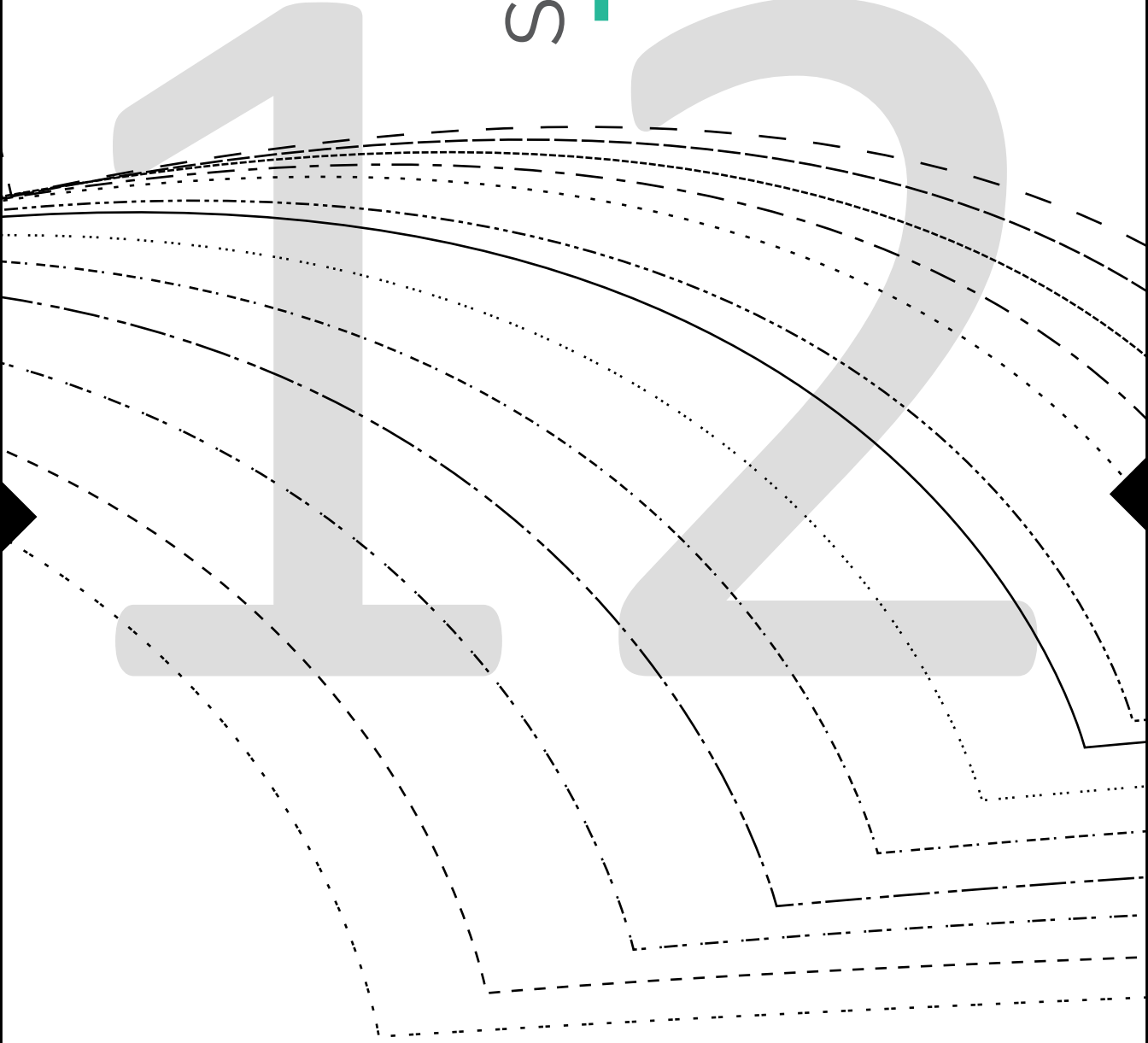


Pattern Here



Cut Lining Here





STRAIGHT S
DESIGN

Bell Tow

Back

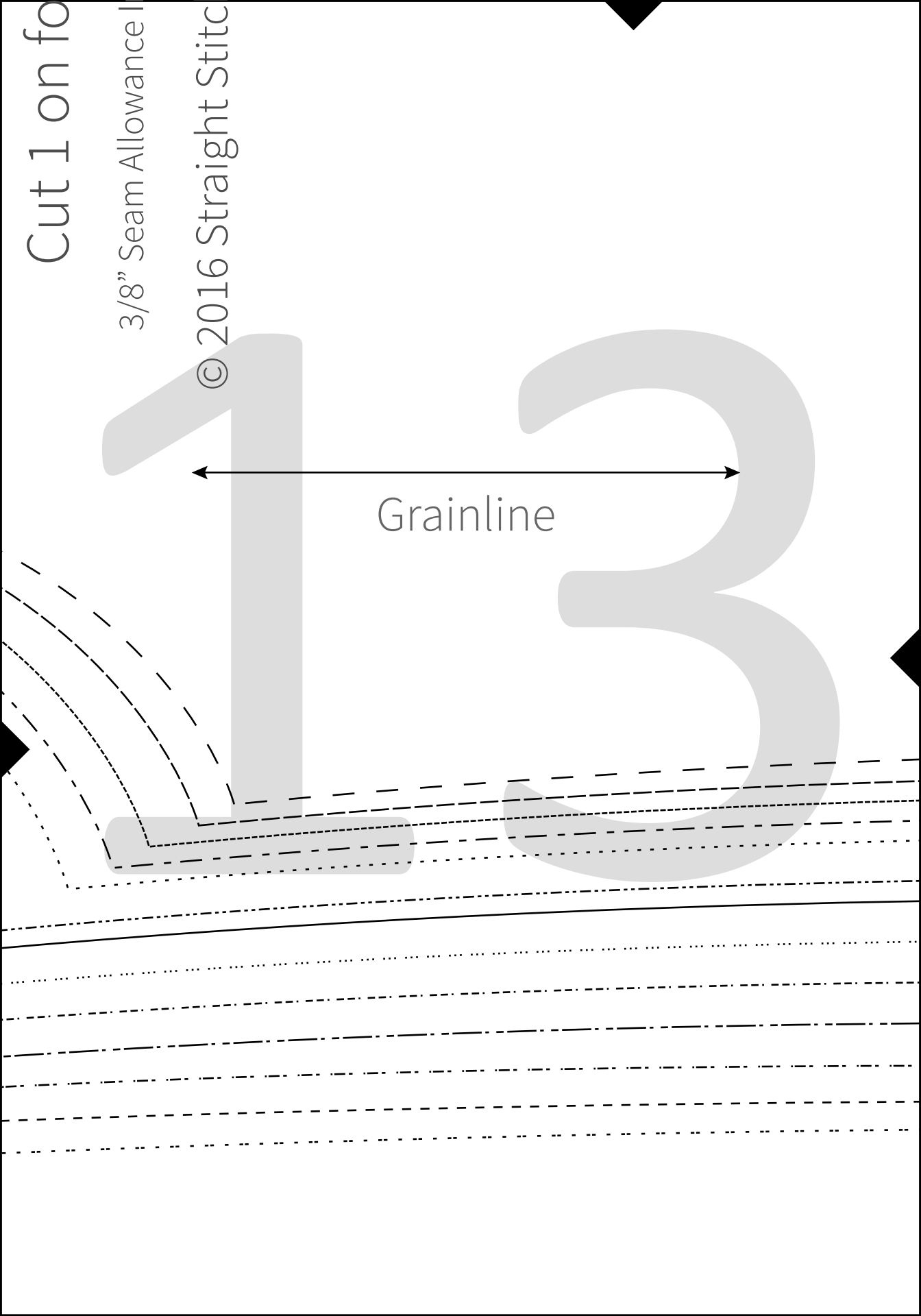
Piece 2

Cut 1 on fo

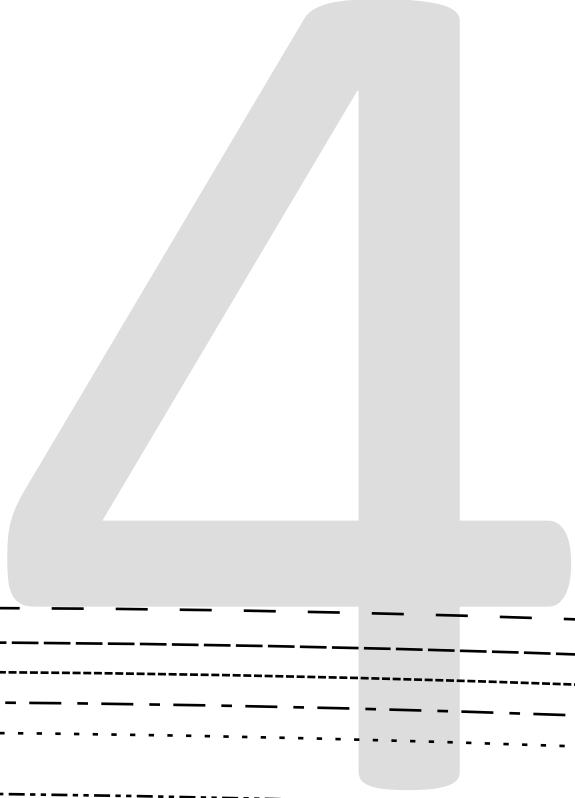
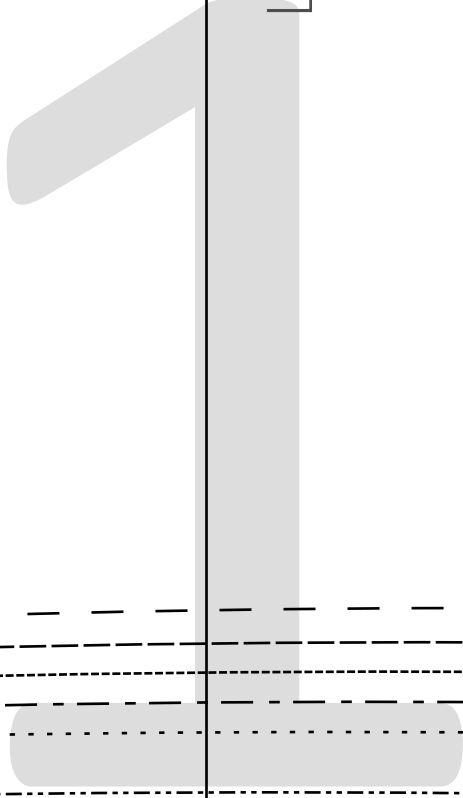
3/8" Seam Allowance

© 2016 Straight Stitc

Grainline

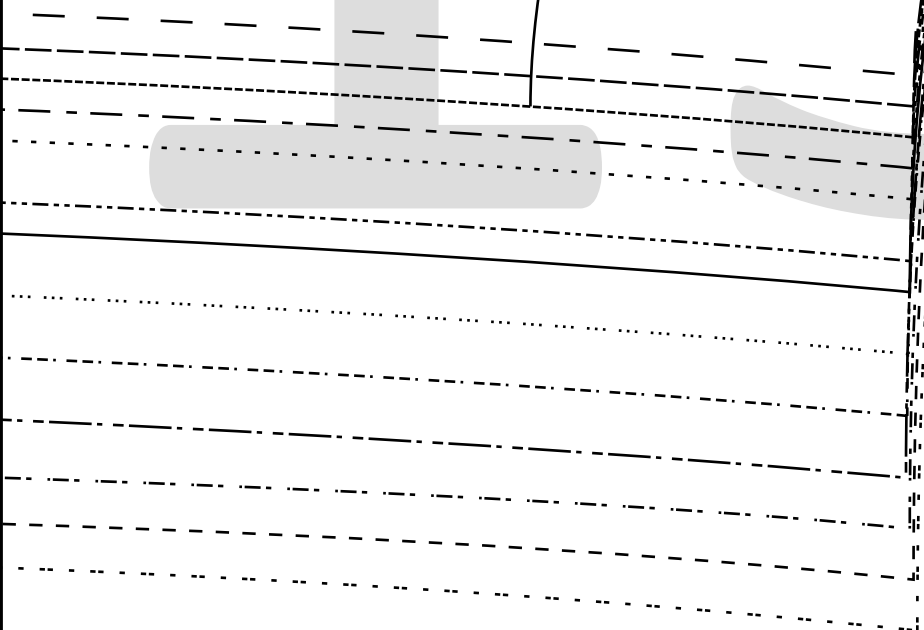


Lengthen/Shorten



1

5



STRAIGHT STITCH

DESIGNS

Size Key	
0	- - - - -
2	- - - - -
4	- - - - -
6	- - - - -
8	- - - - -
10	- - - - -
12	- - - - -
14	- - - - -
16	- - - - -
18	- - - - -
20	- - - - -
22	- - - - -
24	- - - - -

