

STRAIGHT STITCH DESIGNS



CARKEEK

DESCRIPTION

CARKEEK is relaxed meets refined with shirt tail hem and loose flowy shape. Carkeek is meant to be the perfect summer dress sewn in your favourite flowy fabric. Carkeek is perfect for a night on the town with your friends or other half or when hanging out on the weekends at your local farmers market. Dress up Carkeek by throwing on a bright belt and heels or dress down with a fabric tie and your favourite sandals. Want a loose flowy top, just shorten the pattern and pair with shorts and sandals for a trip to the beach. The options are endless with this pattern!

RECOMMENDED FABRICS

Rayon Challis, Voile, Cotton Lawn, Double Gauze. If it has drape it will work perfect for this pattern. Don't even think about using quilting cotton :)

TERMS OF USE

You may make and sell garments made from this pattern in a small scale home business. Please credit "Pattern Designed by Kimberly Payne of Straight Stitch Designs" in any listings. You may not however redistribute this pattern in any form whether by email or paper to another person.



SIZING

The pattern includes women's sizes S - XL. **Please use your bust measurement according to the chart to ensure best fit.** This dress is designed to be loose and flowy.

IMPERIAL (IN.)

Size	S	M	L	XL
Bust	32	36	40.5	46.5
Hip	34.5	38.5	43	49

METRIC (CM.)

Size	S	M	L	XL
Bust	81	91	103	119
Hip	86	98	109	125.5

FINISHED GARMENT MEASUREMENTS

Finished garment measurements are provided so you can make adjustments for a custom fit.

IMPERIAL (IN.)

Size	S	M	L	XL
Bust/Hip	40.5	44.5	49.25	54.5
Length	32	32.25	32.75	33.25

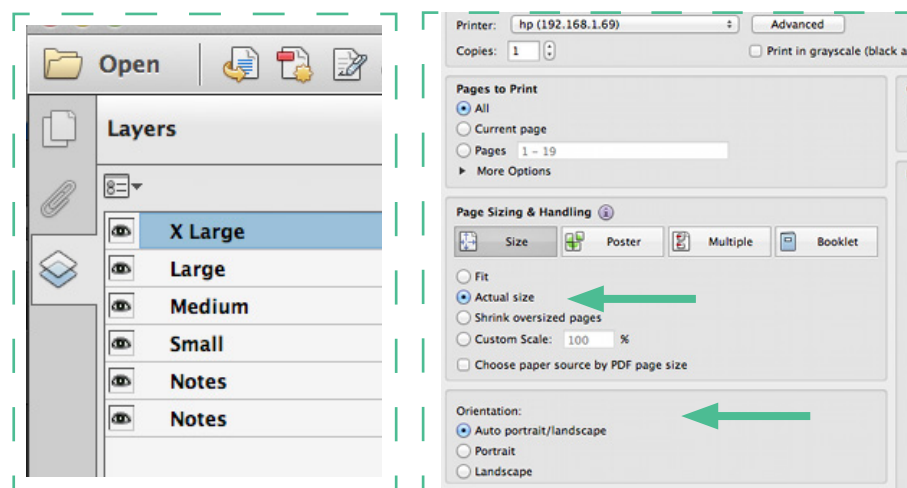
METRIC (CM.)

Size	S	M	L	XL
Bust/Hip	104	114	126.25	140
Length	81.5	82.5	84	85.5

PRINTING INSTRUCTIONS

This pattern includes layered pattern tiles which allows you to print only the sizes that you need. This feature is only available when using Acrobat Reader. Once you have the file open, click on the layers icon on the left-hand side. Next to each size you will see an icon that looks like an eye. By clicking the eye icon, you can turn on and off the layers. You must leave the bottom two layers visible to see all of the pattern notes.

When printing, make sure to select Actual Size and Auto Portrait/Landscape in your print dialog. Please consider conserving paper and only printing the pattern pieces. **Pattern can be found on pages 7-18.**



TILE TAPING INSTRUCTIONS

This pattern is made up of 12 pattern tiles. Each page is numbered to help when assembling the pattern. Use the image above as a reference when taping the pages together. To ensure the pattern comes together correctly, make sure to match up the diamonds found along the sides of the tiles.

Make sure to check that the 1" and 4cm squares are correct before taping together.

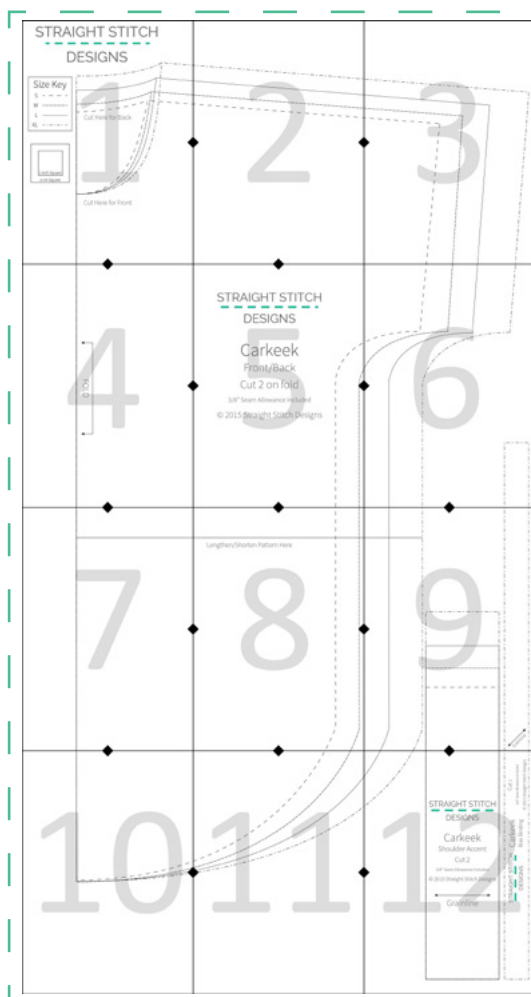
FABRIC CUTTING INSTRUCTIONS (ALL SIZES USE 2 YARDS PLUS BIAS TAPE)

Front and Back: Cut 2 on Fold using front and back cut lines for neckline

Shoulder Accent: Cut 2

Bias Binding*: Cut 1

*If you would prefer to cut the bias binding without the pattern piece, cut a piece 1" x 21.75"



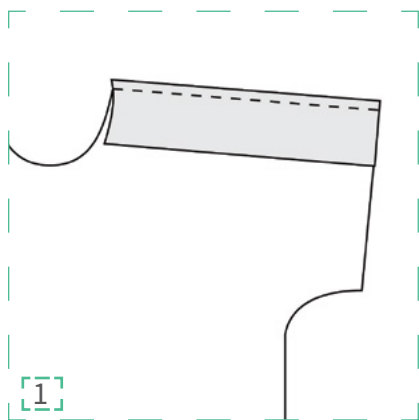
SEWING INSTRUCTIONS

All seam allowances are 3/8"/1cm unless otherwise noted. All seams should be finished with either a zig zag stitch, pinking shears or a serger to keep from fraying in the wash.

Different shading indicates the wrong and right side of the fabric and interfacing.

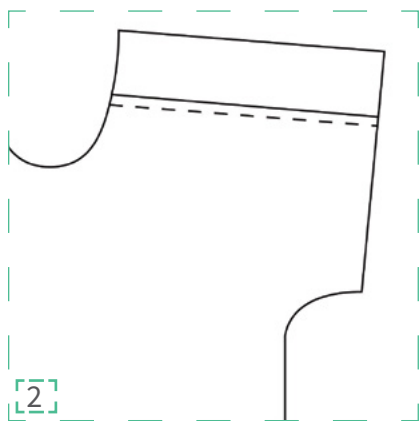


Right Side Wrong Side



With right sides together place the shoulder accent piece on top of the front piece.

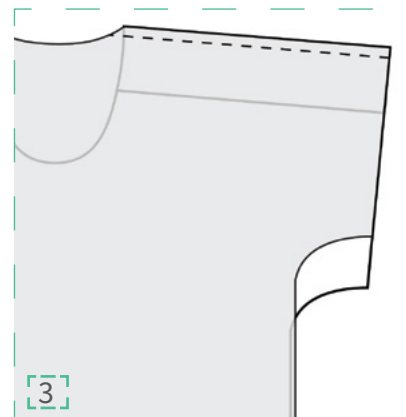
Sew in place.



Open and press the seam allowance towards the front piece.

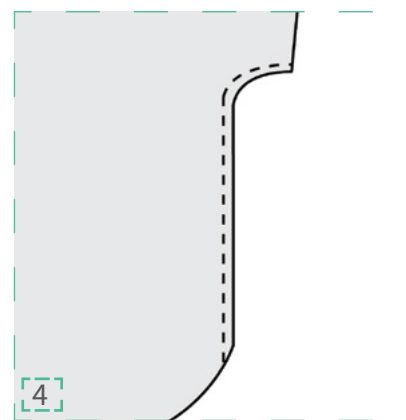
Topstitch seam allowance to the shirt just below the seam from step 1.

Repeat with other shoulder accent piece.

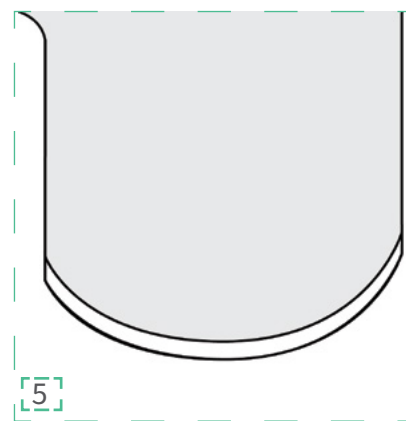


With right sides together place the back piece on top of the front piece. Line up the shoulder seam with the top of the shoulder accent piece on the front piece. Sew together.

Repeat for the other shoulder seam.



With right sides together, sew the front and back pieces together along the side seams.

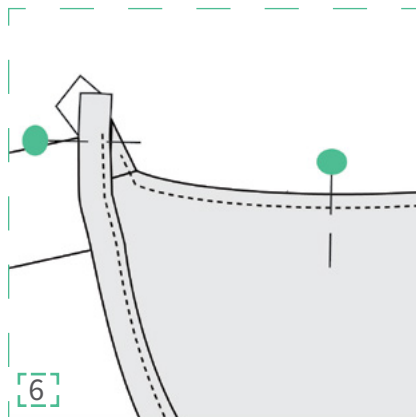


Now to hem the bottom of your dress.

Fold the bottom hem towards the wrong side of the fabric 1/4" and press.

Fold another 1/4" towards the wrong side and press again. Sew hem in place.

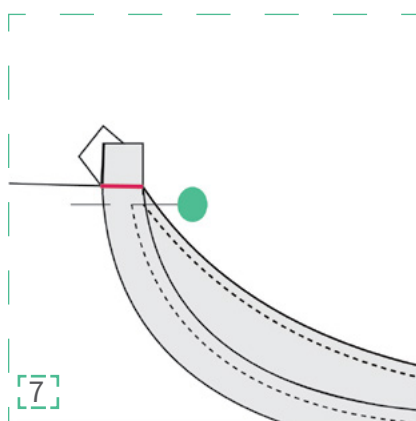
Repeat for each sleeve.



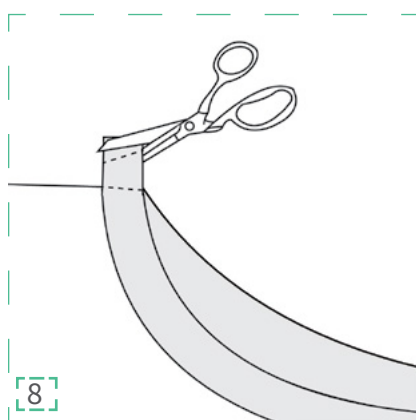
Pin the center of the bias tape on one of the shoulder seam, right sides facing.

Distribute the rest of the bias tape around the neckline and pin in place. You will have extra bias tape on either side of the opposite shoulder seam.

Sew the bias tape to the shirt using 1/4" seam allowance. Stop sewing 1 inch from the shoulder seam.

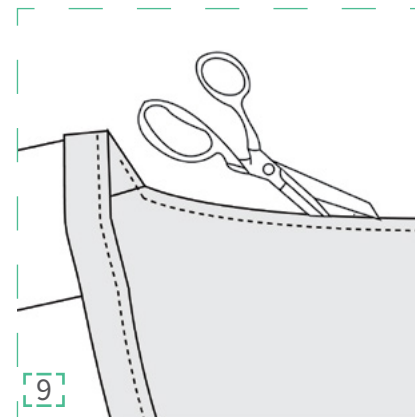


Cross the tails of the bias tape and mark where they intersect, line shown in red.



Sew the tails right sides together on the line you marked in the previous step.

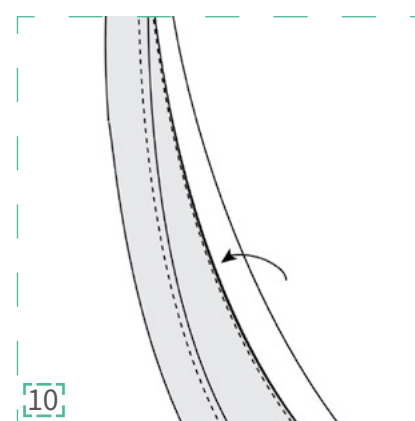
Trim the excess bias binding and press seam allowance open.



Trim seam allowance of the bias tape to 1/8" and clip the curve.

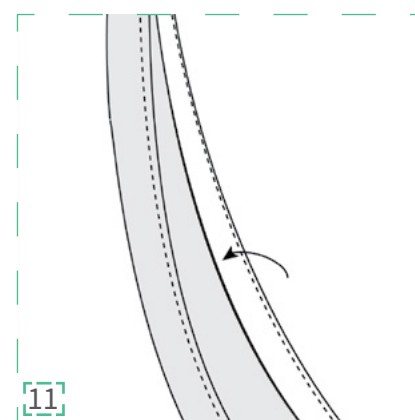
Understitch the seam allowance of the shirt to the bias tape.

Press the bias tape to the inside of the garment.



Take the raw edge of the bias tape and fold the seam allowance under 1/4", lining it up with the previous stitch lines.

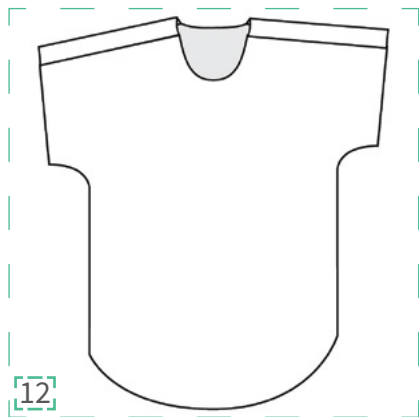
Press well.



Bring the bias tape completely to the wrong side of the shirt.

The seam and understitching will now be inside the neckline as well.

Stitch the binding down with a 1/4" seam allowance.



Ta Da! You have finished your new dress.

Now go make a dozen more!

Additional Resources

I am always here to answer your questions, so don't hesitate to email me at kimberly@straightstitchdesigns.com. Some (my husband) think I have my phone attached to my hand at all times :)

#carkeekdress
#straightstitchdesigns

STRAIGHT STITCH



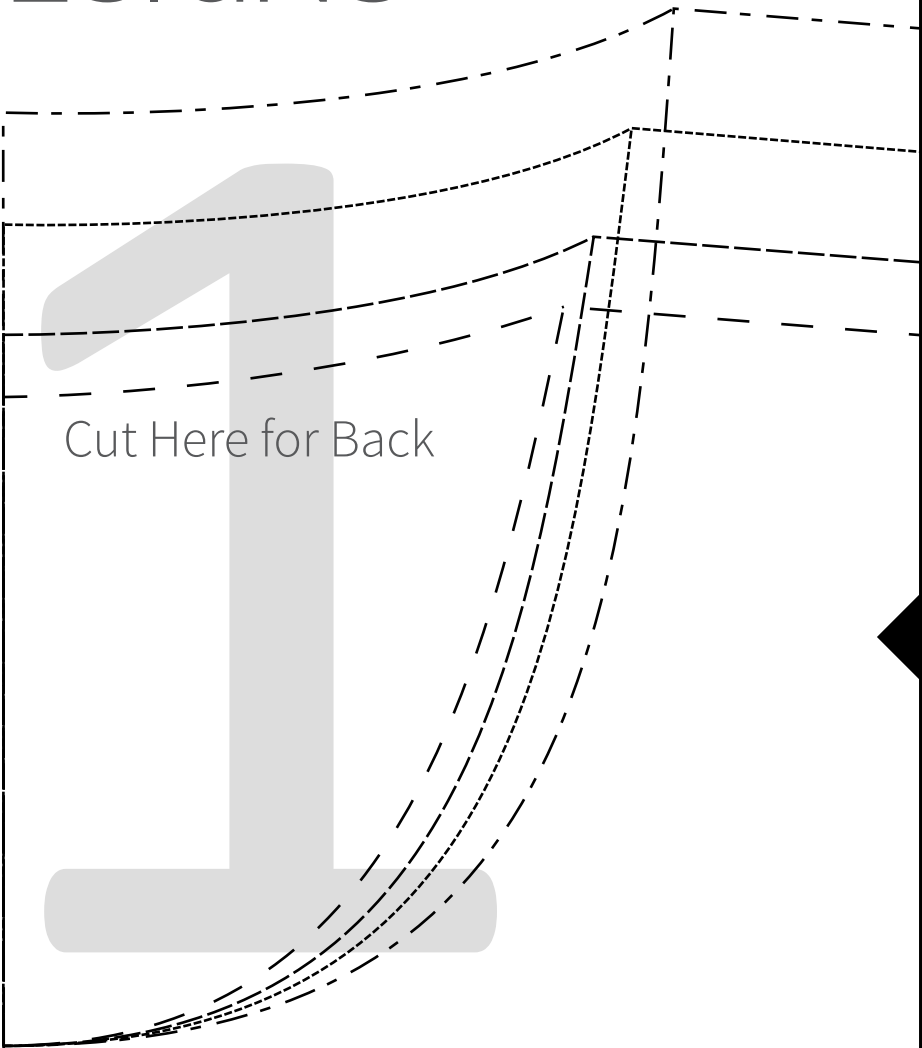
DESIGNS

Size Key

- S - - - - -
- M - - - - -
- L - - - - -
- XL - - - - -

1 inch Square

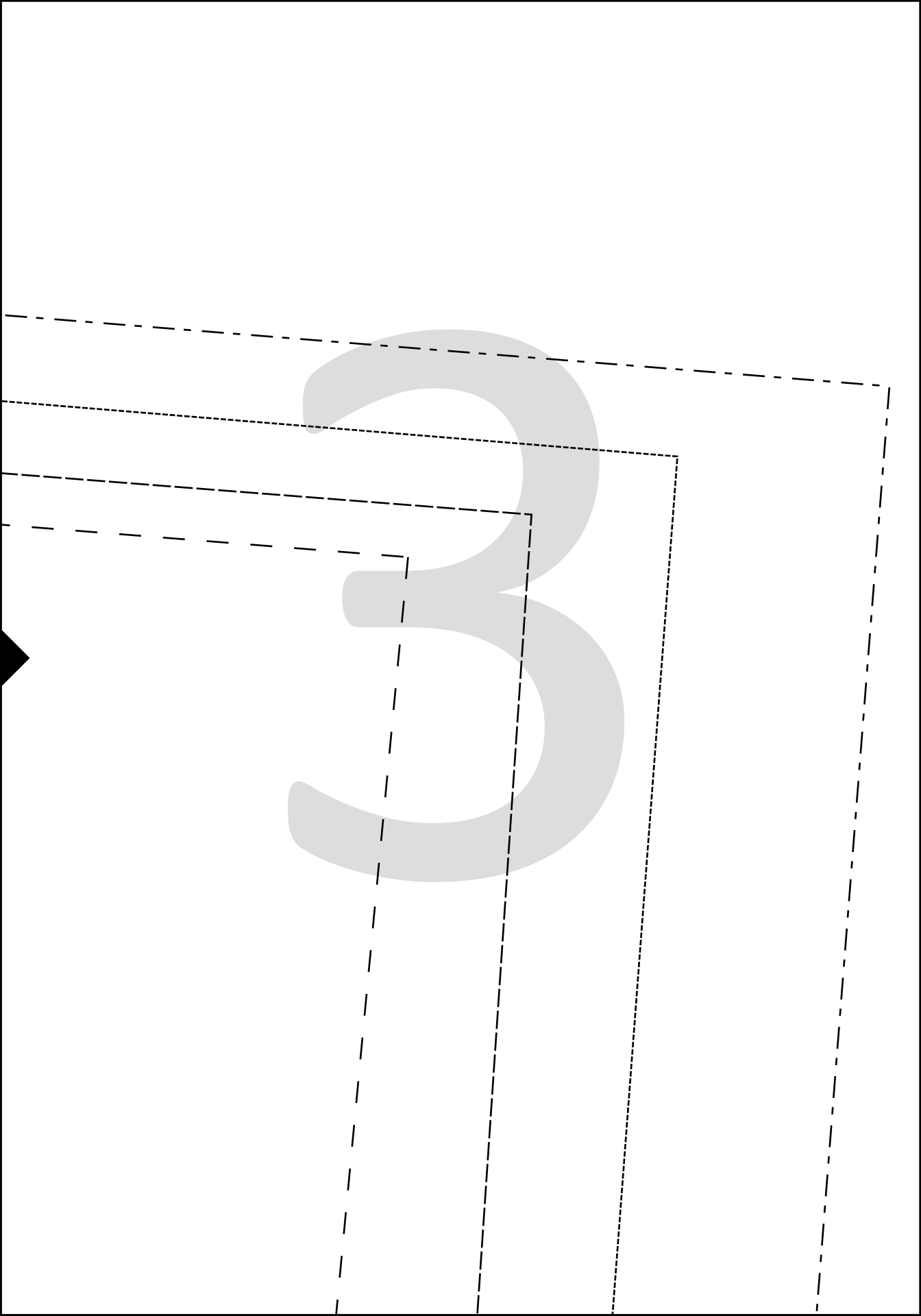
4 cm Square

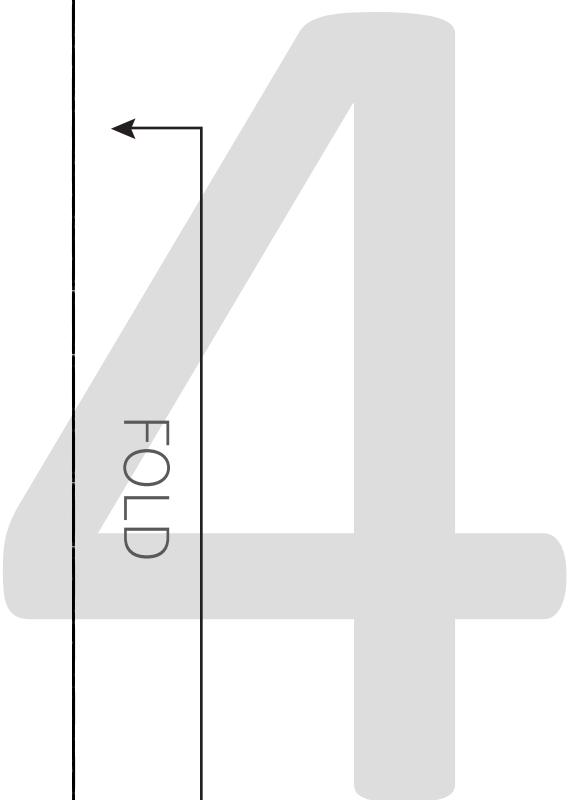


Cut Here for Back

Cut Here for Front

2





STRAIGHT STITCH



DESIGNS

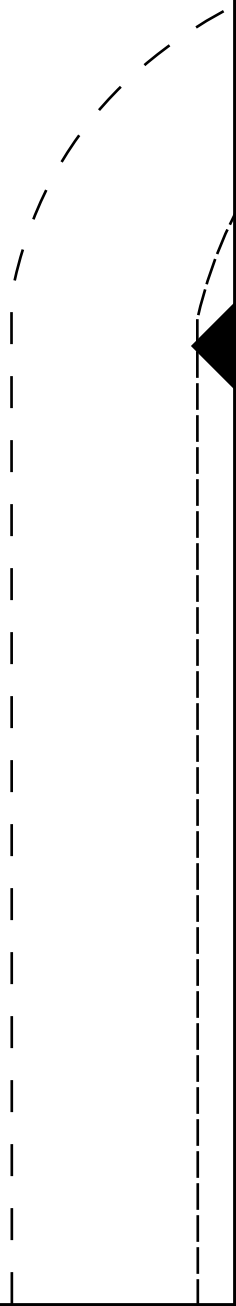
Carkeek

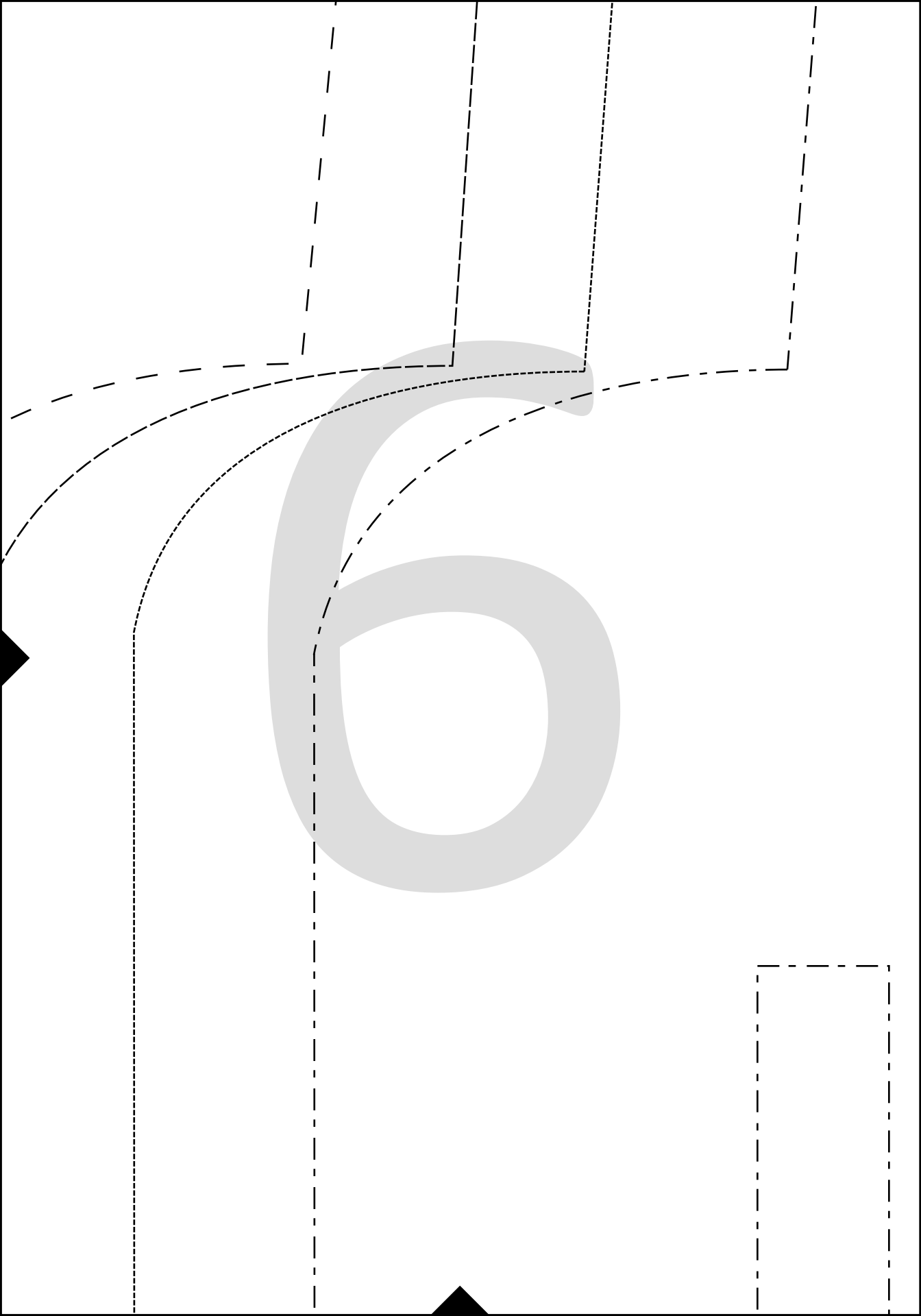
Front/Back

Cut 2 on fold

3/8" Seam Allowance Included

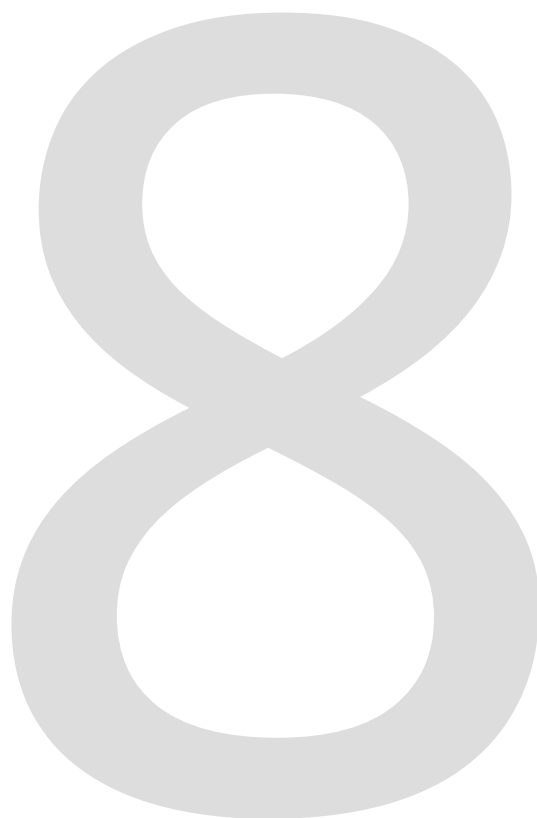
© 2015 Straight Stitch Designs

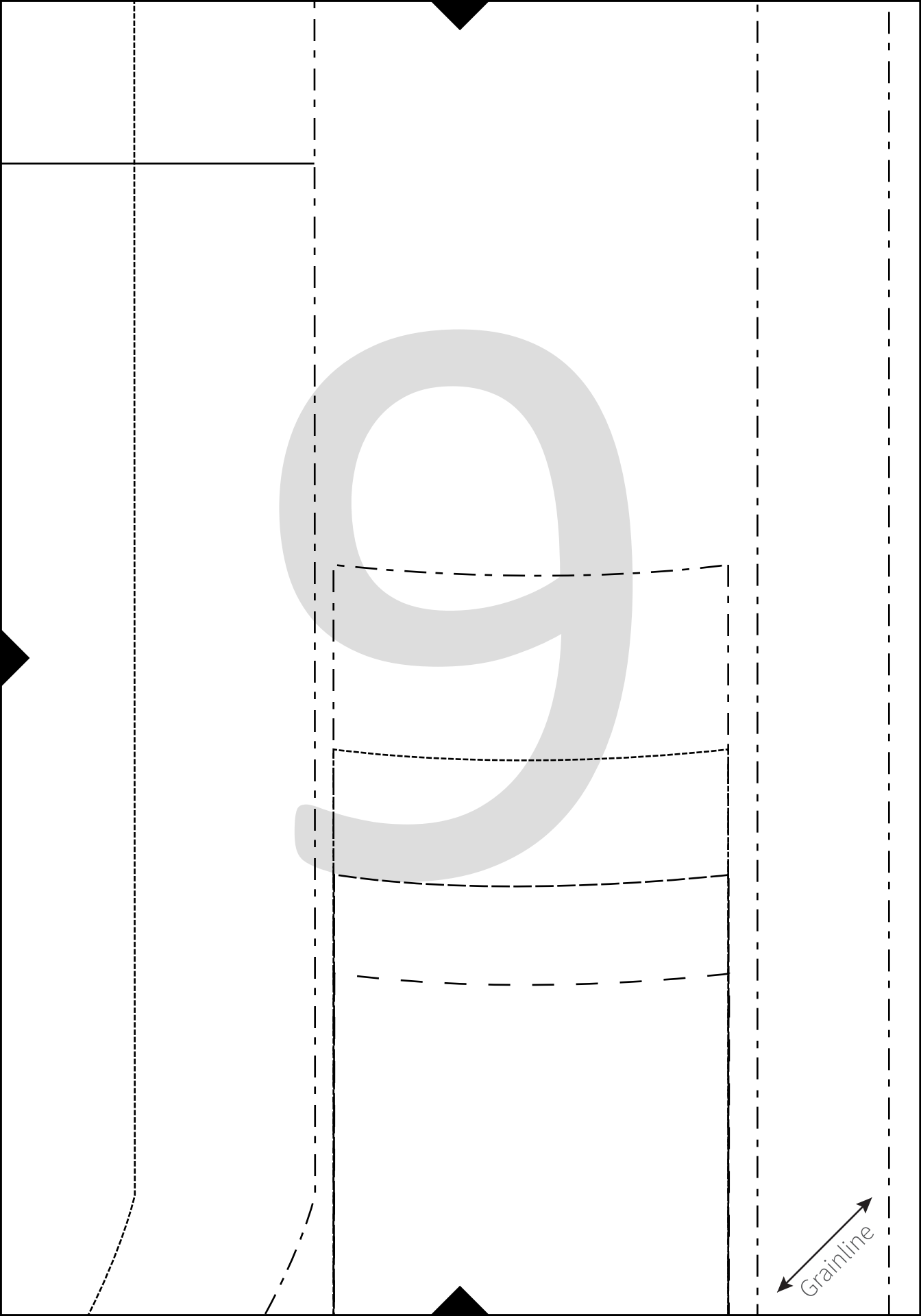




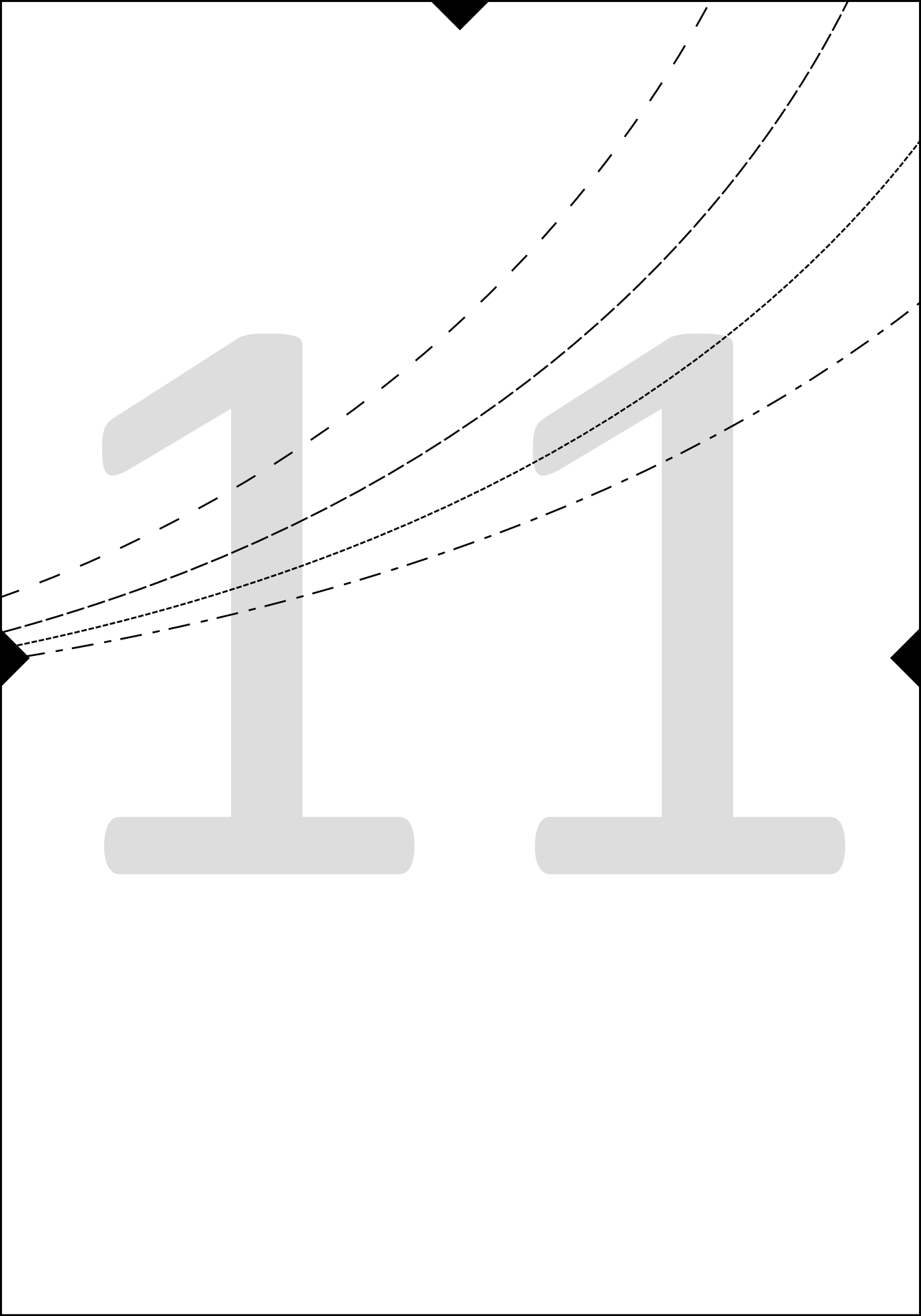
7

Lengthen/Shorten Pattern Here





10



STRAIGHT STITCH
DESIGNS

Carkeek
Shoulder Accent
Cut 2

3/8" Seam Allowance Included

© 2015 Straight Stitch Designs



Grainline

Cut 1

3/8" Seam Allowance Included

© 2015 Straight Stitch Designs

STRAIGHT STITCH Carkeek
DESIGNS Bias Binding